



Olympic Incline Bench Plate Loaded ASSEMBLY INSTRUCTIONS



Please take the time to carefully read the instruction manual before starting the process of assembling your machine. If you have any inquiries or complications, please call us at 662-GYM-BROS, or email us at info@gymbrofitness.com.

Ensure to tighten all nuts and bolts, lubricate any sliding parts, bearings, and moving mechanisms. We also suggest applying Loctite or any kind of thread locking adhesive to anything that does not thread into a Teflon nut. It is also important to ensure that every movement arm is properly aligned prior to frequent use, and that the machine that you are assembling is fully functional.

Tools Required for Installation:
Rubber Mallet
Level
Ratchet and Socket Set
Snap Ring Pliers
Adjustable Wrench
2 People Required

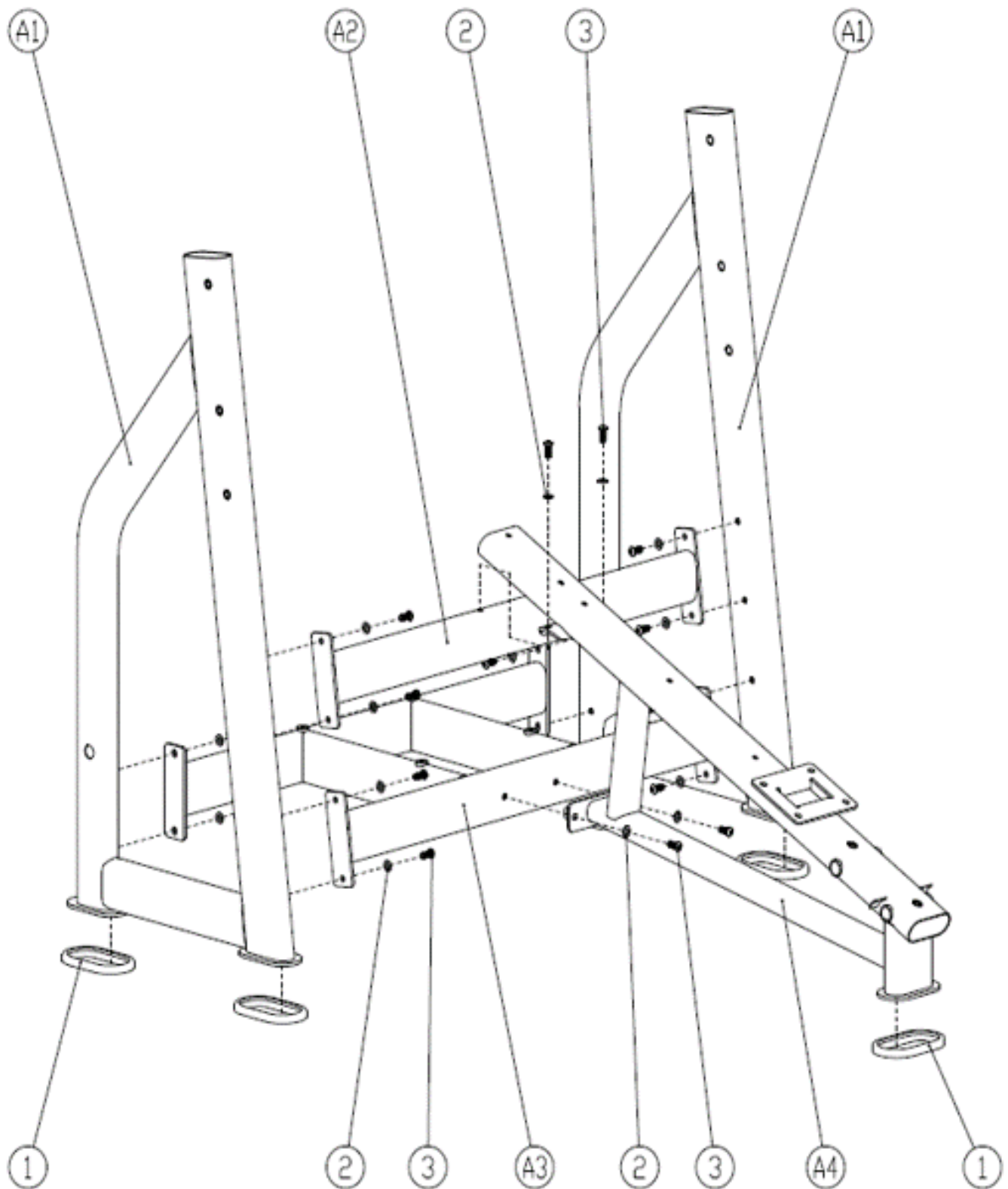
PARTS/HARDWARE LIST

Part Number	Part Description	Quantity
A1	Side Rack	2
A2	Joints	1
A3	Bottom Rack	1
A4	Back Chair Rack	1
A5	Seat Rack	1
1	Foot Pad	5
2	Flat Pad	16
3	Hexagon Socket Head Cap Screws M10x25	16
4	End Cap	4
5	Inner Hexagon Countersunk Head Screws M12x20	6
6	Pothook Plate	2
7	Hexagon Socket Head Cap Screws M10x15	6
8	Sleeve End Cap	6
9	Sleeve Pipe	6
10	Sleeve Pole	2
11	Sleeve End Cap	6
12	Flat Pad	2
13	Hexagon Socket Head Cap Screws M12x20	2
14	Sleeve Pole	2
15	Pedal Plate	1

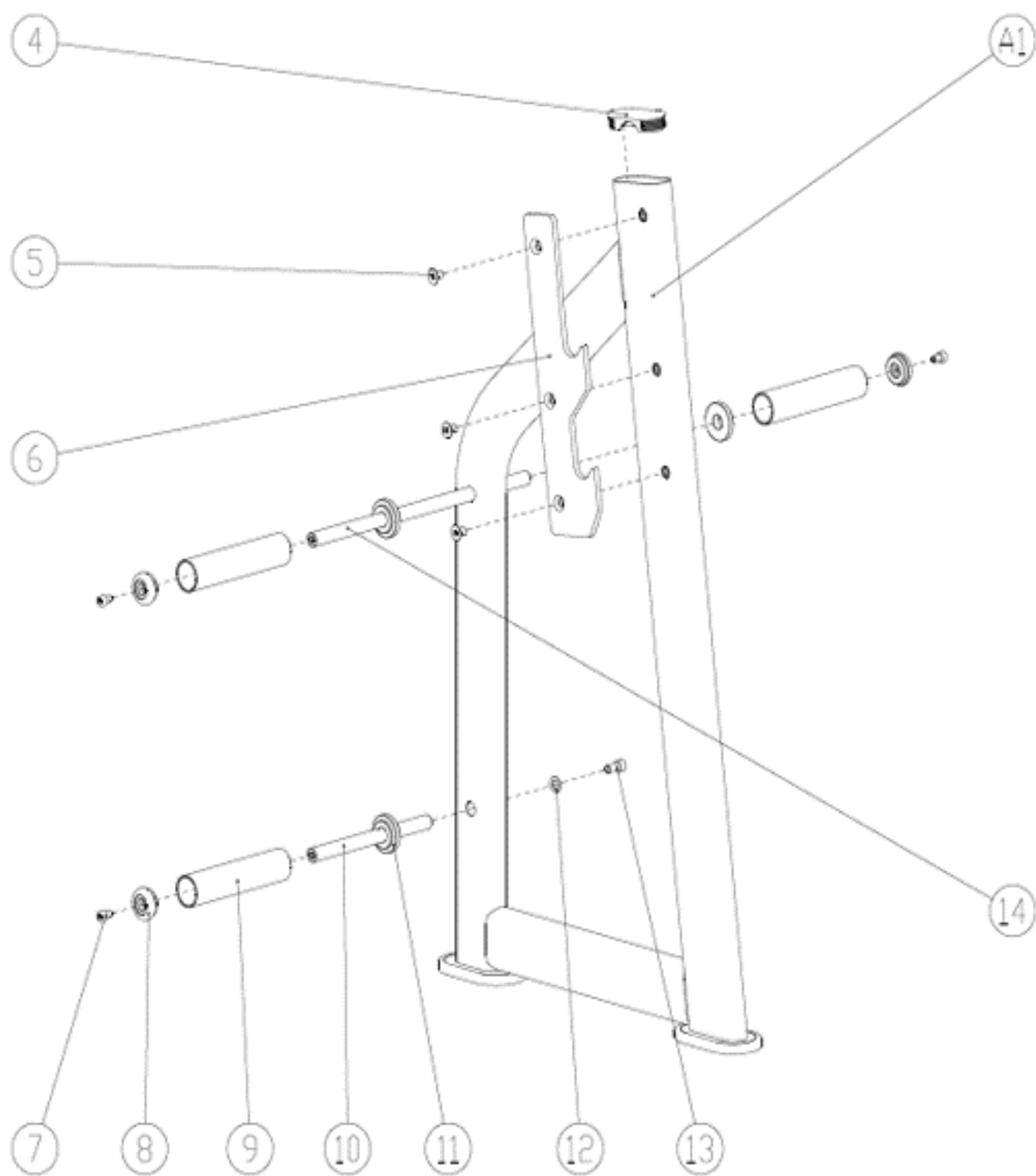
PARTS/HARDWARE LIST Continued

Part Number	Part Description	Quantity
16	Inner Hexagon Countersunk Head Screws M8x15	4
17	Seat Pad	1
18	Seat Lining	4
19	Seat Axle	4
20	Flat Pad	8
21	Hexagon Socket Head Cap Screws M8x30	8
22	Pull Pin	1
23	Pull Pin Spring	1
24	Hand Shank	1
25	Head Pad	1
26	Back Pad	1
27	Seat Pad	1
28	Hexagon Socket Head Cap Screws M10x40	2
29	Seat Regulating Block	1
30	Universal Lining	4
31	Chock Plug	4
32	Hexagon Socket Head Cap Screws M8x45	4
33	Coil Spring	2
34	Seat Rocker Arm	4
35	Seat Rocker Arm Cover	8
36	Inner Hexagon Countersunk Head Screws M8x25	8

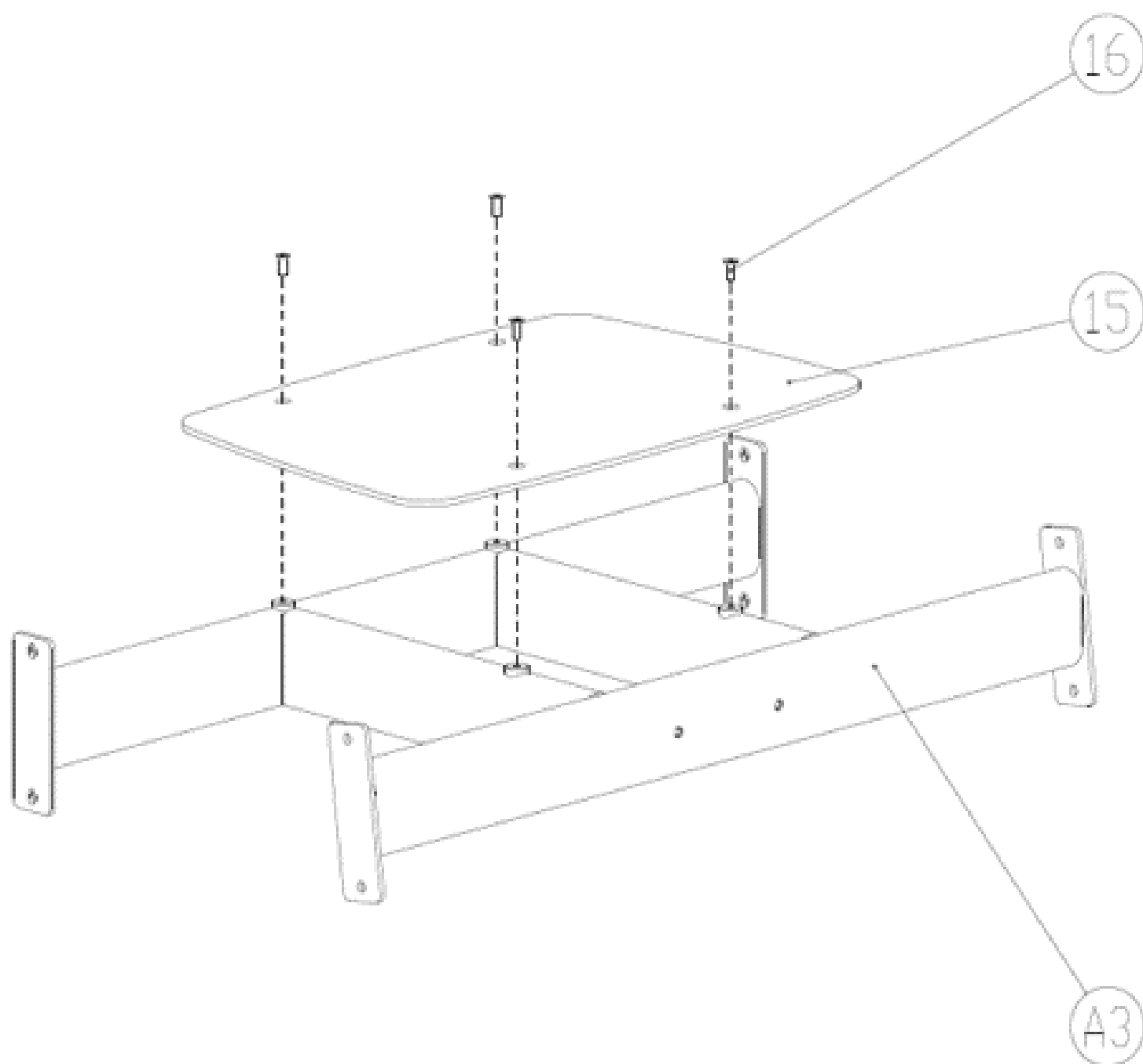
Frame Assembly



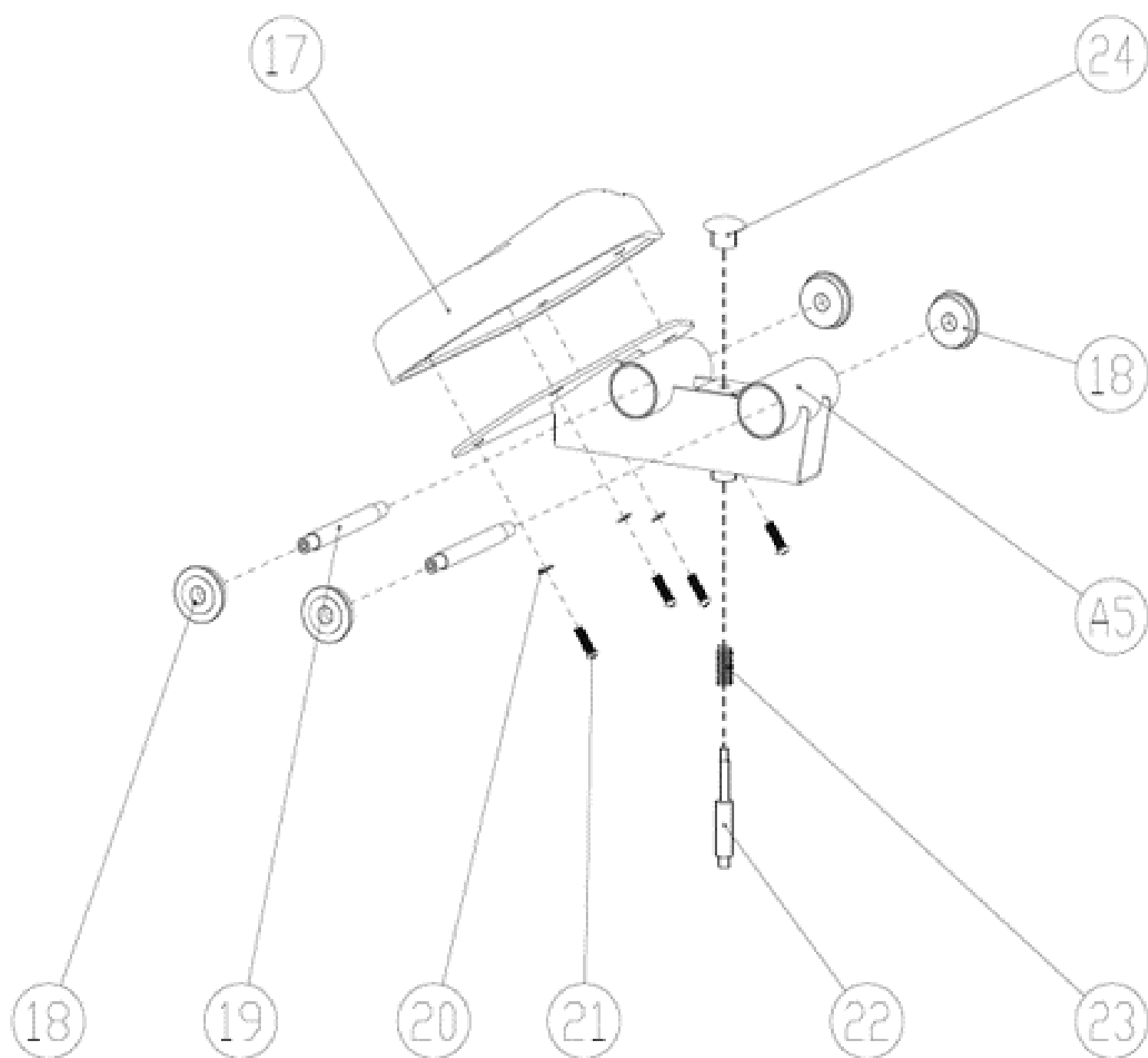
Right Side Rack Installation



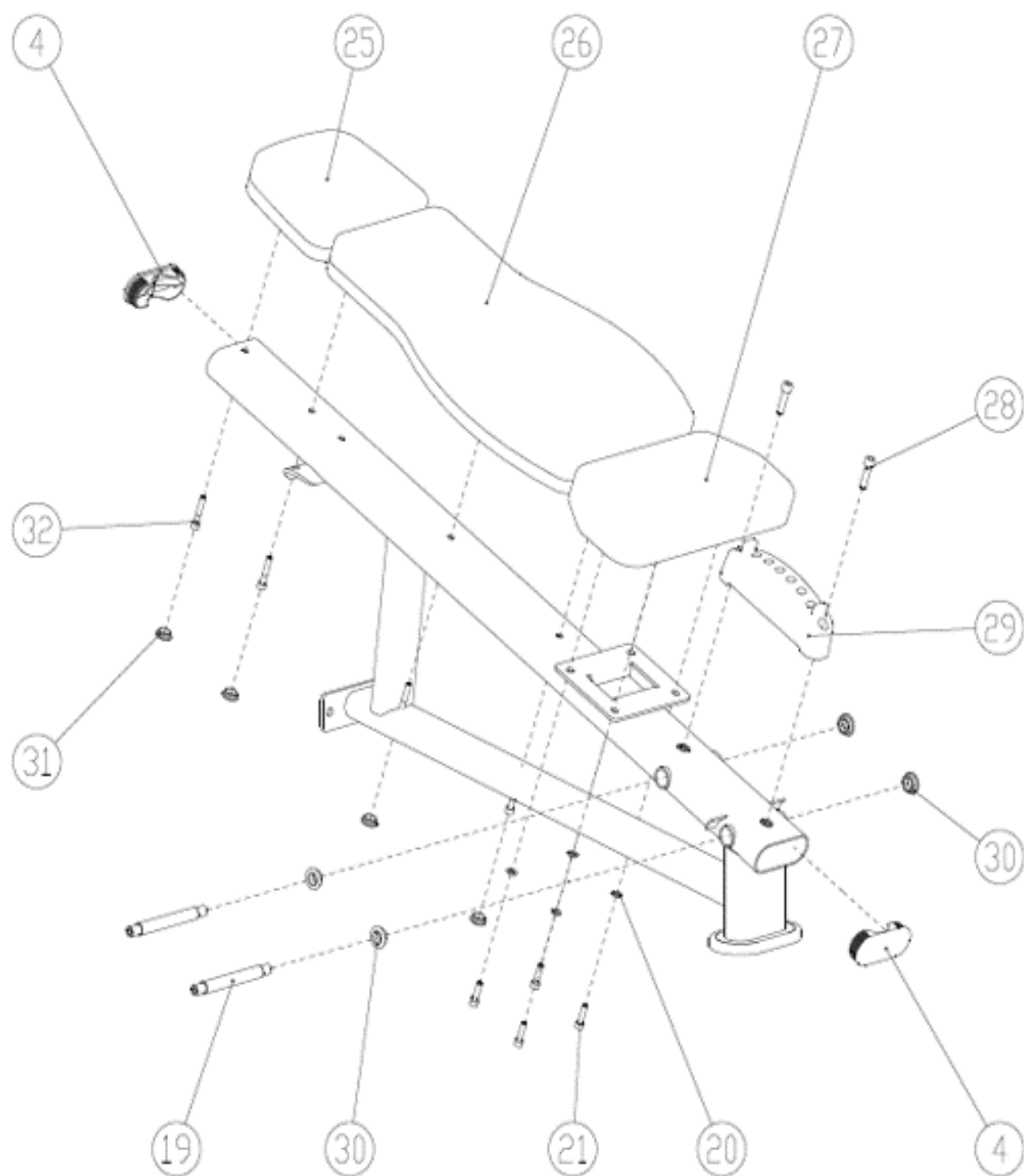
Bottom Rack Installation



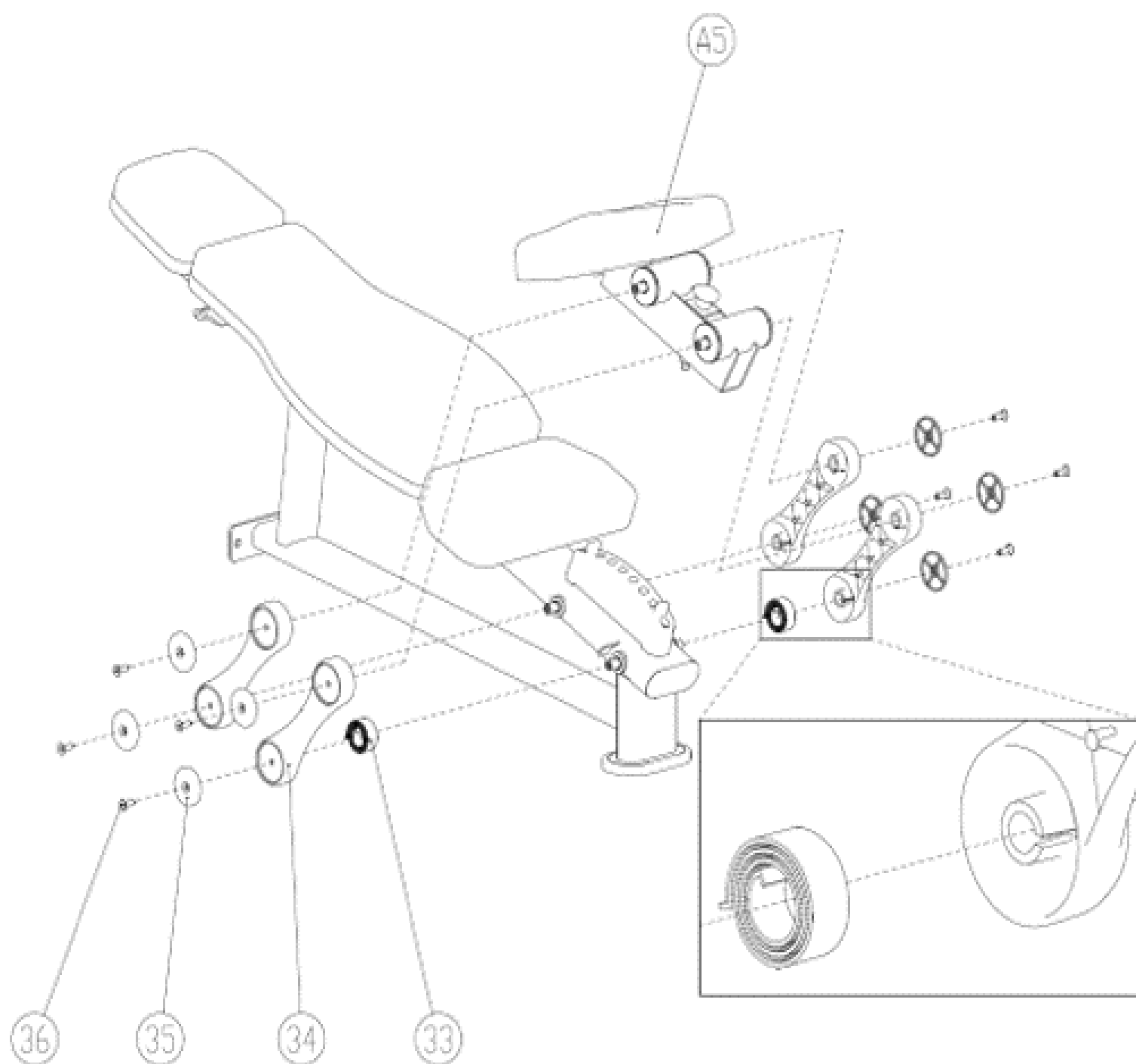
Seat Rack Installation



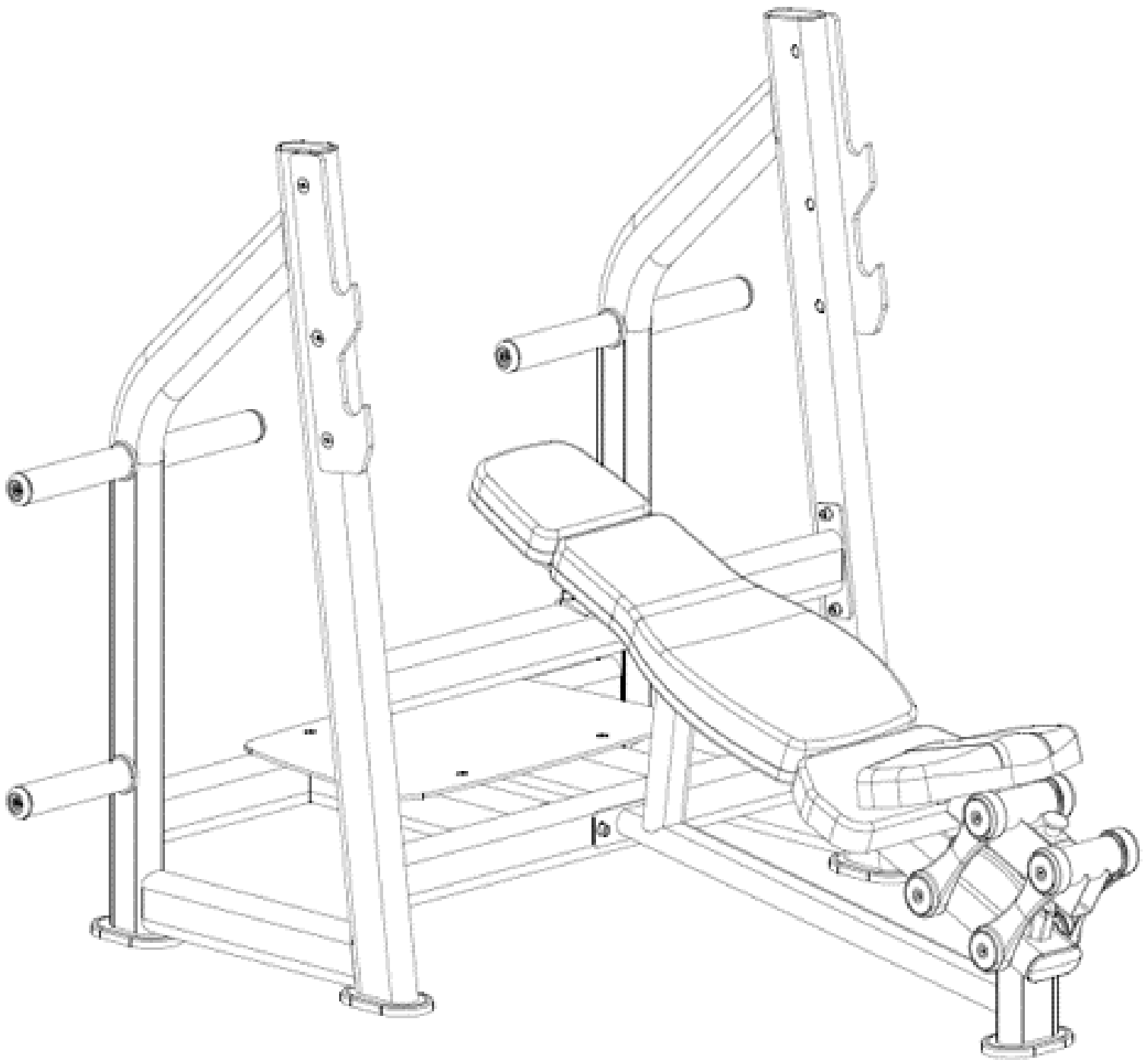
Back Chair Rack Installation



Seat Installation



Final Product



Have a question about assembly?



Please contact a Gym Bro Fitness Team Member!

Hours of Operation:

Monday-Friday 9:00am - 5:00pm (PST)

Saturday 9:00am - 3:00pm (PST)

Sunday CLOSED

Phone: (662)GYM-BROS

Email: info@gymbrofitness.com

Visit Our Website: www.gymbrofitness.com